

# Lime Grades & Standards Training



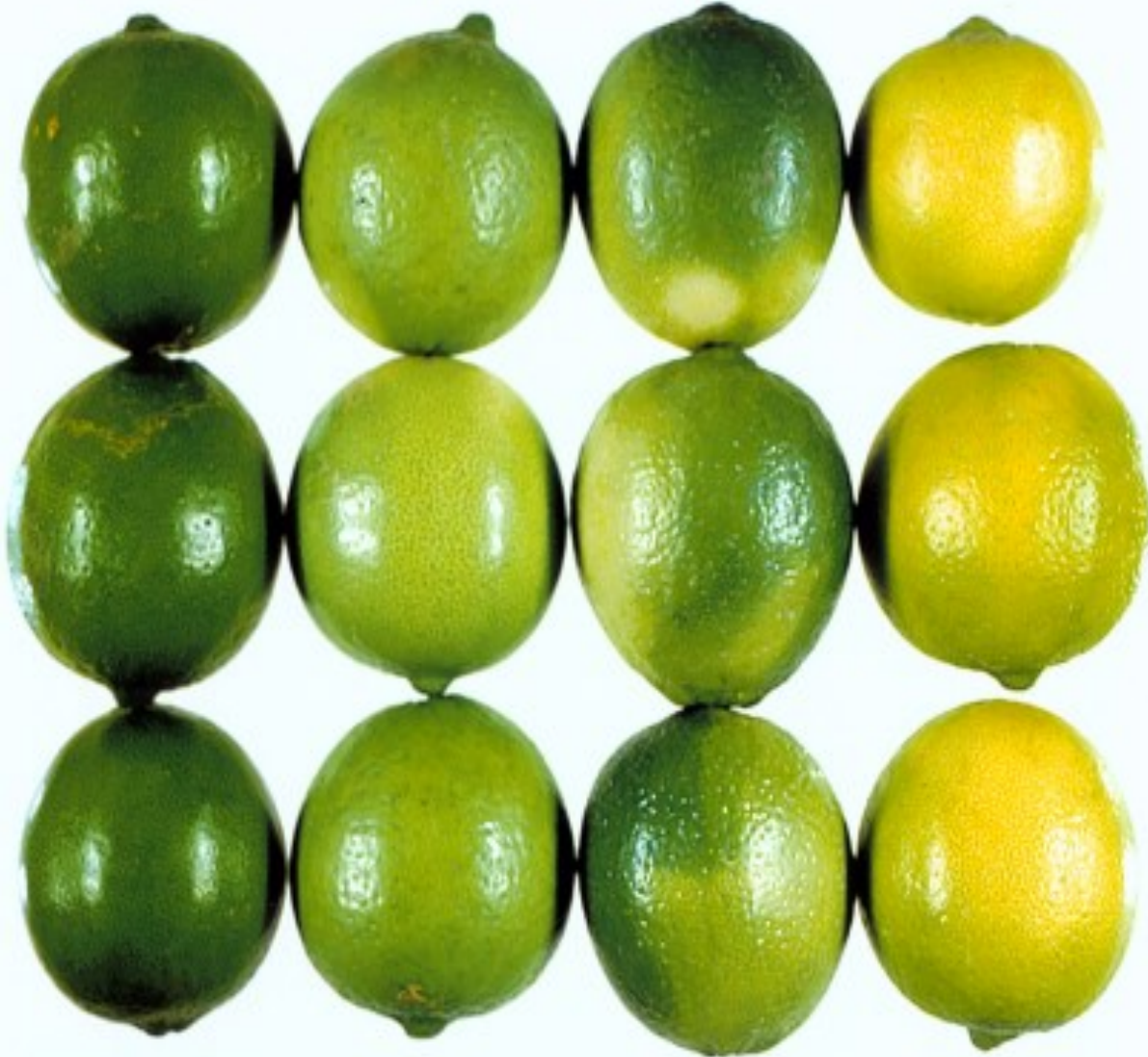
## LIME COLOR

1  
Green

2  
Blanched

3  
Blanched

4  
Yellowing



1. Green color.
2. Uniformly blanched because lime was uniformly shaded (quality)
3. Areas blanched because lime was partially shaded by a leaf, limb, or other fruit (quality).
4. Yellowing due to the ripening process (condition).

FOR IDENTIFICATION ONLY

LIM-1-IDENT  
DECEMBER 1998

GRADE	ALLOWANCES	Does YELLOWING count as a defect?	Does BLANCHING count as a defect?	NOTES REGARDING COLOR OF LIMES
U.S. #1	10% nonserious defects  5% serious defects	YES	YES	Every piece of fruit in the box must have ¾ of the fruit with “good green” color otherwise that box fails to meet grade U.S. #1
U.S. #1, Mixed Color	10% nonserious defects  5% serious defects	YES	NO	Every piece must have ¾ “good green” color w/ EXCEPTION for blanching
U.S. #1, Turning	10% nonserious defects  5% serious defects	NO	YES	Every piece must have ¾ “good green” color w/ EXCEPTION for yellowing
U.S. #1, Mixed Color, Good Delivery Standard	15% nonserious defects  8% serious defects	YES	NO	Every piece must have ¾ “good green” color w/ EXCEPTION for blanching  Allowances based on “PACA Good Delivery Standards”
U.S. #Combination (or U.S. #1.5), Mixed Color	60% of limes in the box = 10% nonserious  40% of limes in the box = 100% nonserious	YES	NO	60% of limes per box must have ¾ “good green” color w/ EXCEPTION for blanching
U.S. #2	100% nonserious defects  Up to 10% serious defects	YES	YES	

**\*\*Price Sheet, Bills of Lading (BOL), & Invoice MUST reflect the EXACT Grade language as written above\*\***

Above is based on USDA AMS: United States Standards for Grades of Persian (Tahiti) Limes; Pages 1 to 3, sections for “Grades” – <https://www.ams.usda.gov/grade-s-standards/lime-grades-and-standards>.

# Table of Contents



## Defects 5

Yellowing.....	6
Blanching vs. Yellowing.....	7
Blanching.....	8
Stylar.....	9
Skin Breakdown.....	10
Scarring.....	11
Oil Spots.....	12
Scale.....	13
Decay.....	14
Mold.....	15
Sunburn.....	16
Misshape.....	17
Wood Pocket.....	18
Scab.....	19

## Bugs 20

Spider Mite (Pinto).....	21
Red Mite.....	22
Unaspis.....	23
Mealy Bug.....	24
Rust Mite.....	25
White Mite.....	26

## Temperatures 27

## Sizing 28

# Lime

# Defects

The following pages will show examples of different defects that can be found in the world of limes such as:

*Key: (C) = Condition, (Q) = Quality*

- Yellowing (C)
- Blanching (Q)
- Styler (C)
- Skin Breakdown (C)
- Scarring (Q)
- Oil Spots (Q)
- Scale (Q)
- Decay (C)
- Mold (Q)
- Sunburn (Q)
- Misshape (Q)
- Spider Mite (Pinto)
- Wood Pocket
- Scab

# Yellowing



Light Yellowing



Full Yellowing

VS.



Yellowing in Warehouse Light



Yellowing in Natural Light

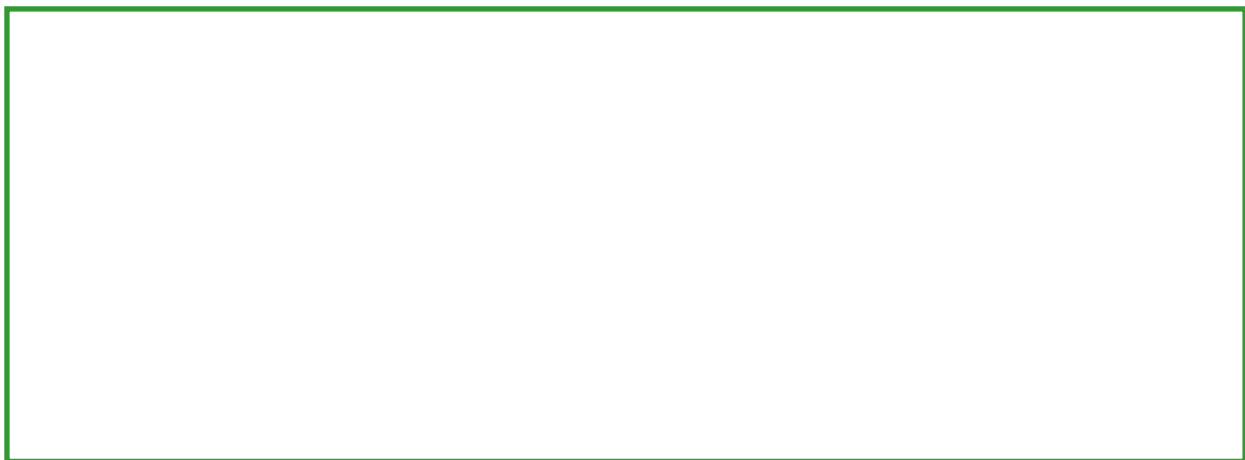
VS.



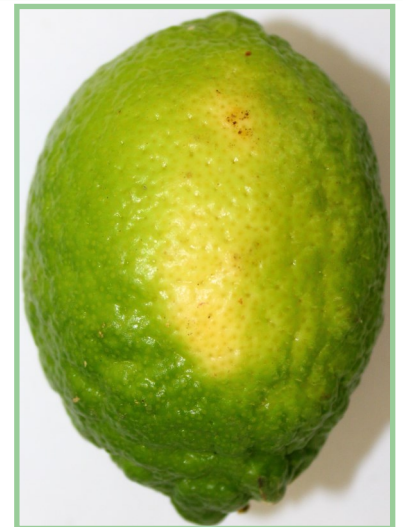
Yellowing Progress Over Time

*Yellowing is yellowing; all yellowing, no matter the amount, will be scored as such.*

# Yellowing vs. Blanching



# Blanching



Blanching in Natural Light



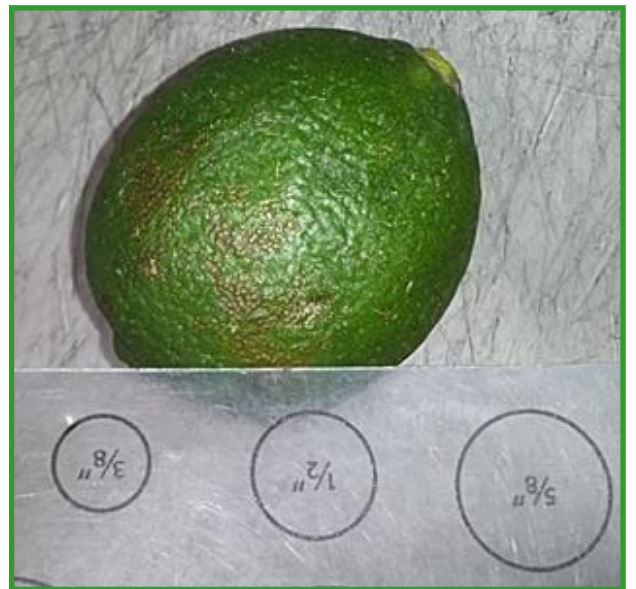
Blanching in Warehouse Light



# Stylar



# Skin Breakdown



# Scarring



Thorn Scarring



Scarring in Warehouse Light



Scarring in Natural Light



# Oil Spots



Oil Spots in Warehouse Light



Oil Spots in Natural Light



# Scale



# Decay



# Mold



## Sooty Mold



# Sunburn





# Misshape



# Wood Pocket



# Scab



# Bugs

The following pages will show examples of different bugs that can be found in the world of limes such as:

⇒ Spider Mite (Pinto)



⇒ Red Mite



⇒ Unaspis



⇒ Mealy Bug



⇒ Rust Mite



⇒ White Mite



# Spider Mite (Pinto)



# Red Mite



# Unaspis



# Mealy Bug





# Rust Mite



# White Mite



# Temperatures

- ◆ Transit
- ◆ Pulp
- ◆ Storage— 48° To 50°F
- ◆ Ambient
- ◆ Packing